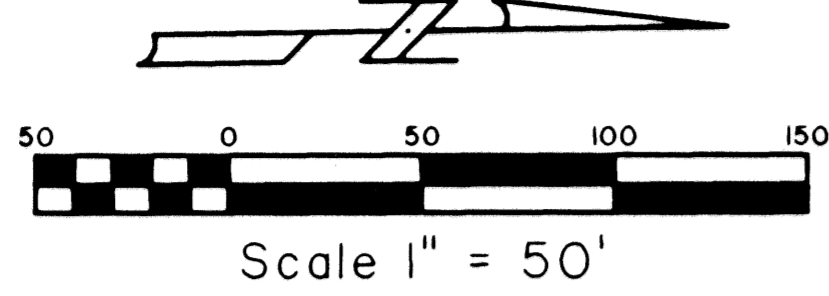
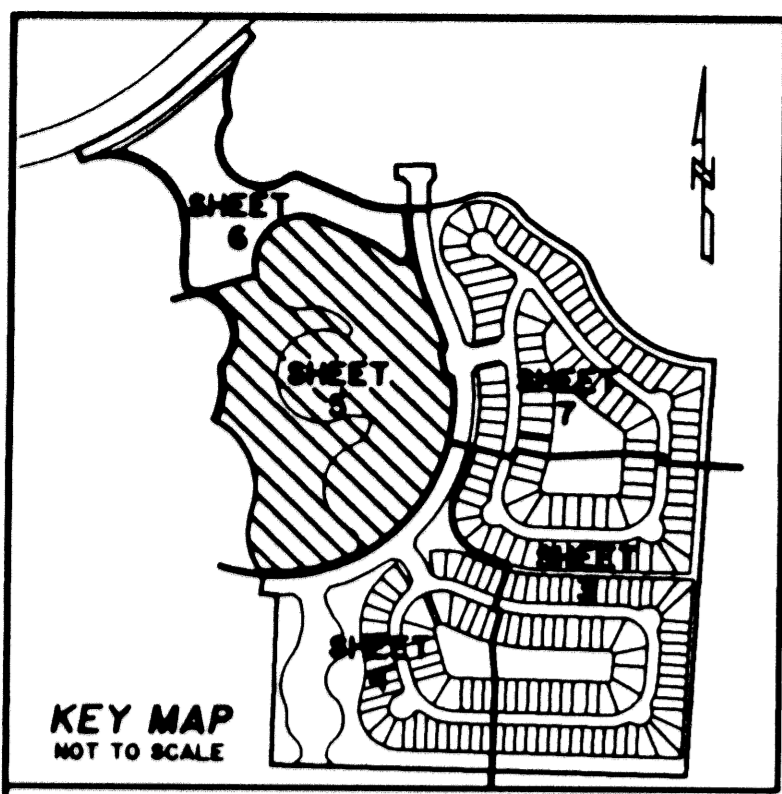


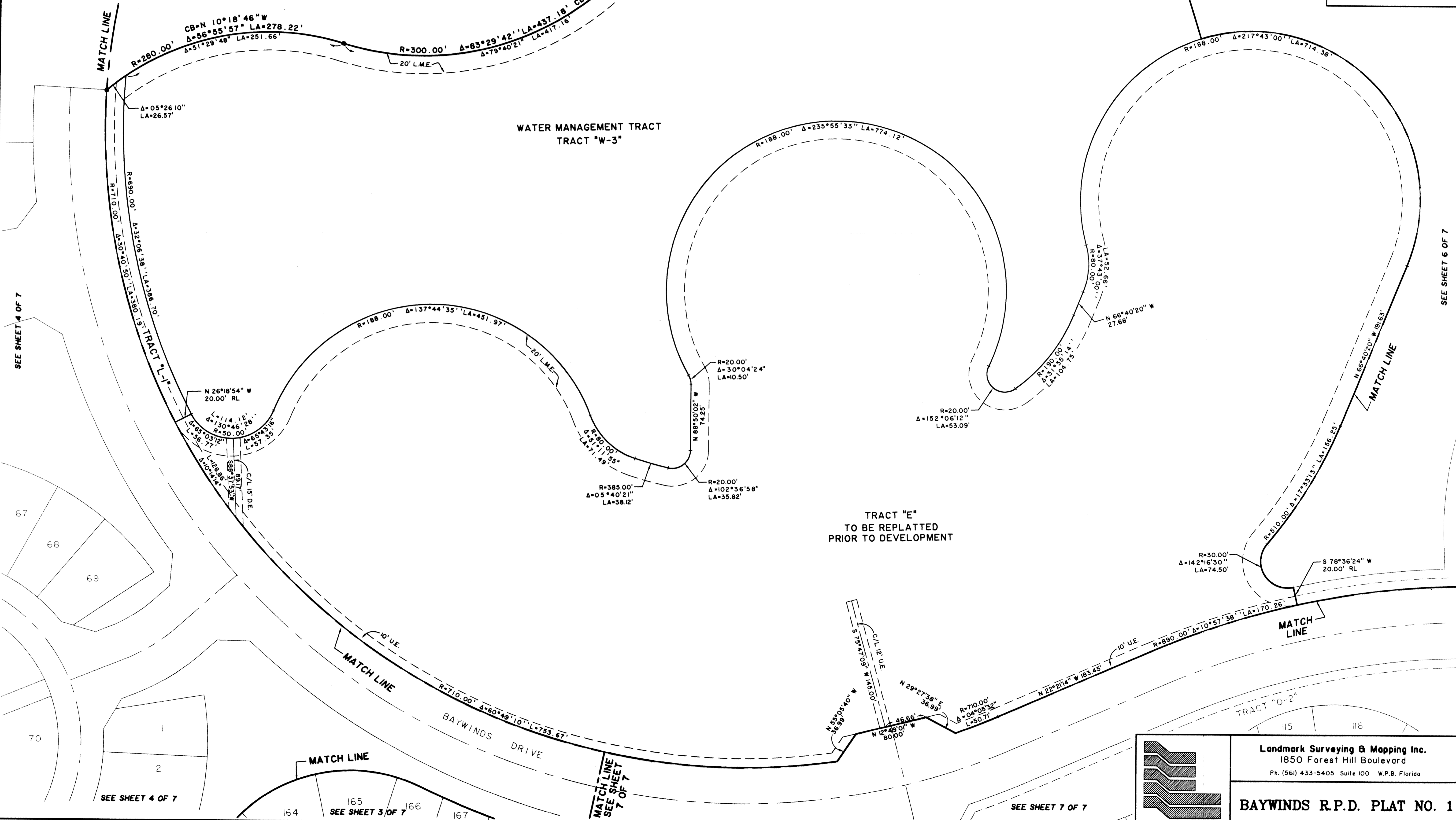
BAYWINDS R.P.D. PLAT NO. 1

LYING IN SECTION 19, TOWNSHIP 43 SOUTH, RANGE 42 EAST
CITY OF WEST PALM BEACH, PALM BEACH COUNTY, FLORIDA.
FEBRUARY, 1999
SHEET 5 OF 7

141



NOT PLATTED



SEE SHEET 4 OF 7

SEE SHEET 6 OF 7

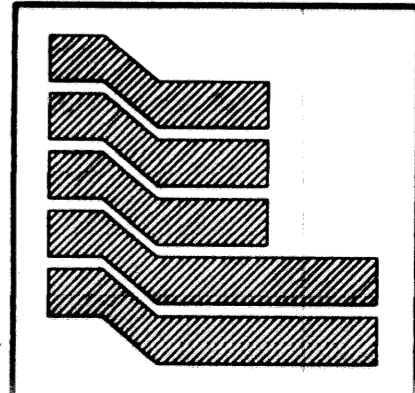
TAZ 809

SEE SHEET 4 OF 7

SEE SHEET 3 OF 7

SEE SHEET 7 OF 7

SEE SHEET 7 OF 7



Landmark Surveying & Mapping Inc.
1850 Forest Hill Boulevard
Ph. (561) 433-5405 Suite 100 W.P.B. Florida

BAYWINDS R.P.D. PLAT NO. 1